

GREAT RIVERS – BIRDS AND WILDLIFE

Broome to Darwin
15 NIGHT PACKAGE

Cruise 14:

Monday 1 September to Tuesday 16 September
2025

from
\$12,500
per person / twin share

WHAT'S INCLUDED:

- Transfer to Broome Port
- 15 night cruise from Broome to Wyndham
- Coach transfer from Wyndham to Kununurra
- Afternoon Air North Flight from Kununurra to Darwin

2025

Our final cruise of the season explores the rugged northern coastline and the estuaries and waterways of the King George and Berkeley Rivers with a focus on the many bird species and wildlife. You will still visit the Kimberley sites that are on our other itineraries (tides and time permitting) but experiencing the amazing bird and wildlife in this remote region is the theme of this cruise.

September 1: Broome Port 9am boarding

You will be picked up from your accommodation and transferred to Broome Port for a 9am boarding. Enjoy a welcome drink and a briefing by the Captain before you to settle in, become familiar with your surroundings and relax as we cruise around Cape Leveque and into the Buccaneer Archipelago. You are about to begin the journey of a lifetime!

Itinerary inclusions (tides and time permitting):

Talbot Bay & the Horizontal Falls:

Talbot Bay is home to the famous Horizontal Falls. The region's massive tides create a spectacular scene, sending huge volumes of water pouring through two narrow chasms in the land formation when the tides reach peak flow in both rising and falling conditions. With up to 10m of height difference between the waters of each of the two inland bays and the sea, water gushes through creating a mass of whirlpools, boils and raging currents. In Cyclone Creek, the incredible marine life includes impressive Tawny Nurse sharks which often come to greet Discovery One.

Montgomery Reef:

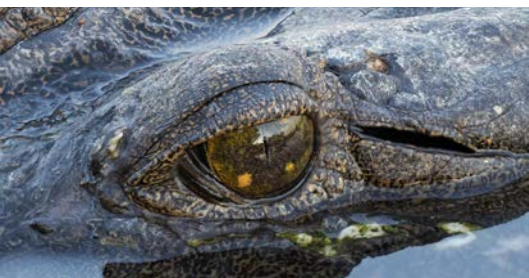
North West of Raft Point is Montgomery Reef. This 400 sq km reef can emerge up to 4m above the waterline at low tide, creating a visual spectacle of waterfalls and sea life. Several small islands dot the reef and support rich mangroves, crocodiles, turtles, birds and fish.

Sampson Inlet:

Further north is Sampson Inlet which leads into a monsoonal rainforest pocket with almost permanent fresh water. Many previous passengers have called this the most beautiful spot on the Kimberley coast. Keen photographers should remember their cameras! Saint George Basin & the Prince Regent River: Within the St George Basin are two flat topped hills, Mt Trafalgar and Mt Waterloo, which provide a spectacular backdrop as you cruise to the mouth of the Prince Regent River. This river is the eroded remains of the longest single straight lineament in Australia, making it yet another geological wonder. Get your cameras ready as you experience some spectacular scenery, flora and fauna on our journey down this remote and pristine waterway, concluding at the majestic King Cascade



DISCOVERY ONE
KIMBERLEY CRUISES



Falls. This spectacular site is where American model, Ginger Meadows, was fatally attacked by a crocodile in 1987, a horror story which has been retold around the world. Keep an eye out for crocodiles as you view these magnificent falls which cascade over fern covered tiers in breathtaking splendour.

Careening Bay:

Careening Bay is within the southern part of Nelson Bay where, in 1820, Phillip Parker King careened the vessel HMC 'Mermaid' for repairs whilst surveying the Australian coastline. His carpenter carved the vessel's name into an ancient boab tree which is still visible today.

York Sound & the Hunter River:

Prince Frederick Harbour lies within York Sound and it is here that we find the Roe and Hunter River estuaries. This area boasts sensational scenery, with cathedral-like gorges and eroded sandstone features such as the Indian Head at the entrance to the Hunter River.

King George River:

The King George River flows into Koolama Bay and is bordered by wonderful sandstone coloured cliffs. It is here you will see the spectacular King George Falls; the tallest falls in Western Australia.

The Berkeley River:

The stunning red ochre cliffs bordering the Berkeley River dominate the scenery as we cruise through this magical region of beautiful waterfalls and freshwater pools. The Berkeley has extensive smaller creeks feeding into it and drains the Seppelt and Collison Ranges and Gardner Plateau.

September 16: Wyndham, Kununurra & Darwin:

It is here in Wyndham that the cruise concludes. A bus will be waiting to take you to Kununurra for a short town tour and lunch prior to an afternoon Air North flight to Darwin.

Something Extra..... This itinerary lists all the places you can reasonably expect to visit on your cruise between Broome and Wyndham. It is likely, however, that there will be additional places of interest visited on the actual cruise, time and tides allowing, which is why we prefer not to give you a day by day itinerary. **The Captain aims to maximize the cruising experience for all passengers, so he will decide when and where he will take you during your time on the Kimberley coast. In this sense, every cruise is a little different and each passenger's experience unique.**



DISCOVERY ONE
KIMBERLEY CRUISES

1800 996 717
discoveryone.com.au