

JOIN MASTER PHOTOGRAPHER STEVE PARISH ON AN EXCLUSIVE KIMBERLEY JOURNEY!

Broome to Broome
11 NIGHT PACKAGE

August

Cruise 12:
Thursday 7th August –
Monday 18th August

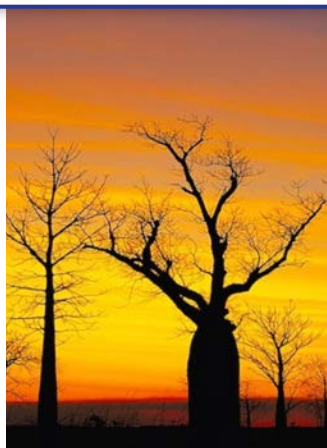


from
\$12,490
per person / twin share

2025

WHAT'S INCLUDED:

- Transfer between Broome and Broome Port
- 11 nights aboard the Discovery One
- Helicopter flight over Mitchell Falls
- Light aircraft flight between Mitchell Plateau & Broome
- Driving Option: You can leave vehicles in Broome at the Broome Caravan Park in Wattle Drive. The bus will pick you up from here or drop you off after your cruise. You need to arrange stay and storage directly with the Park.



Join us for a once-in-a-lifetime experience aboard the Discovery One Kimberley Explorer, where you'll have the rare opportunity to work alongside Steve Parish in an intimate, bespoke workshop setting.

Over 11 days, with only 19 other enthusiasts, you'll explore the breathtaking Kimberley coastline, one of Australia's last wilderness areas, while learning from one of the country's most iconic nature photographers. The shallow draft of Discovery One, the small group size, and our two light RIB tenders allow for deep exploration into the wilderness.

This exclusive workshop will enhance your technical photography and creative life skills, immersing you in Steve's unique six-step approach—connecting deeply with nature and inspiring you to tell its story through your lens with your unique voice.

This package starts from and returns to Broome.



DISCOVERY ONE
KIMBERLEY CRUISES

Day One: Broome

Cruise 12: You will be transferred from your accommodation to Broome Port for a 9am boarding. Please let us know where you are staying for ease of transfer. You will be welcomed onboard Discovery One by our friendly crew. Settle in, get acquainted with the boat and relax as Discovery One cruises around Cape Leveque and into the Buccaneer Archipelago. Your cruise of a lifetime is about to begin.

Itinerary inclusions (tides permitting):

Talbot Bay & the Horizontal Falls

Talbot Bay is home to the famous Horizontal Falls. The region's massive tides create a spectacular scene, sending huge volumes of water pouring through two narrow chasms in the land formation when the tides reach peak flow in both rising and falling conditions. With up to 10m of height difference between the waters of each of the two inland bays and the sea, water gushes through, creating a mass of whirlpools, boils and raging currents. In Cyclone Creek, the incredible marine life includes impressive Tawny Nurse sharks which often come to greet Discovery One.

Montgomery Reef

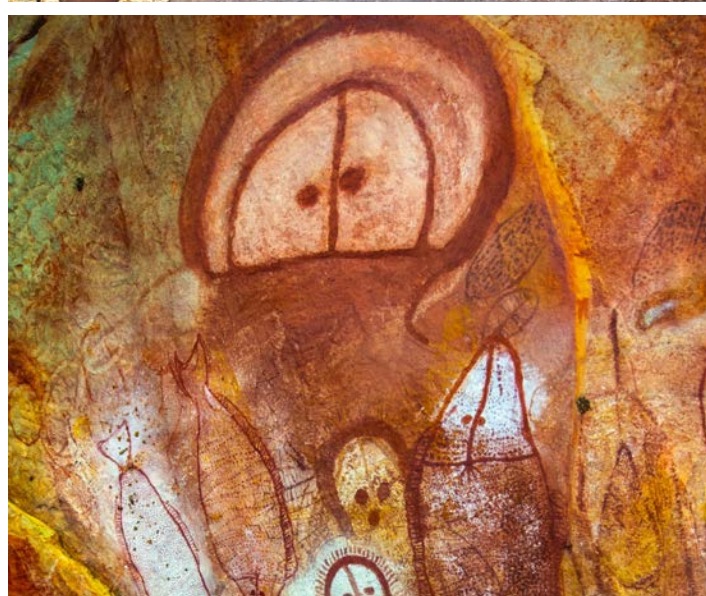
North West of Raft Point is Montgomery Reef. This 400 sq km reef can emerge up to 4m above the waterline at low tide, creating a visual spectacle of waterfalls and sea life. Several small islands dot the reef and support rich mangroves, crocodiles, turtles, birds and fish.

Sampson Inlet

Sampson Inlet leads into a monsoonal rainforest pocket with almost permanent fresh water. Many previous passengers have called this the most beautiful spot on the Kimberley coast.

St George Basin and the Prince Regent River

Within the St George Basin are two flat topped hills, Mt Trafalgar and Mt Waterloo, which provide a spectacular backdrop as you cruise to the mouth of the Prince Regent River. This river is the remains of the longest single straight lineament in Australia, making it yet another geological wonder. Get your cameras ready as you experience some spectacular scenery, flora and fauna on our journey down this remote and pristine waterway, concluding at the majestic King Cascade Falls. This spectacular site is where American model, Ginger Meadows, was fatally attacked by a crocodile in 1987, a horror story which has been



retold around the world. Keep an eye out for crocodiles as you view these magnificent falls which cascade over fern covered tiers in breathtaking splendor.

Careening Bay

Careening Bay is within the southern part of Nelson Bay where, in 1820, Phillip Parker King careened the vessel HMC 'Mermaid' for repairs whilst surveying the Australian coastline. His carpenter carved the vessel's name into an ancient Boab tree which is still visible today.

York Sound and the Hunter River

Prince Frederick Harbour lies within York Sound and it is here that we find the Roe and Hunter River estuaries. This area boasts sensational scenery, with cathedral-like gorges and eroded sandstone features such as the Indian Head at the entrance to the Hunter River. In 1987, a horror story which has been retold around the

world! Keep an eye out for crocodiles as you view these magnificent falls which cascade over fern covered tiers in breathtaking splendor.

Last Day: Broome

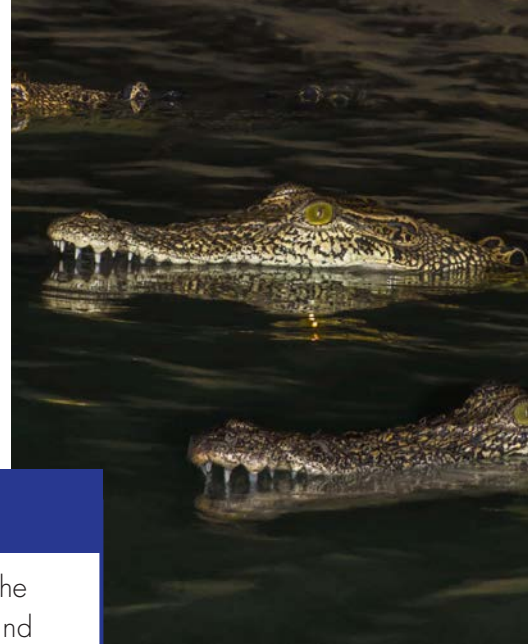
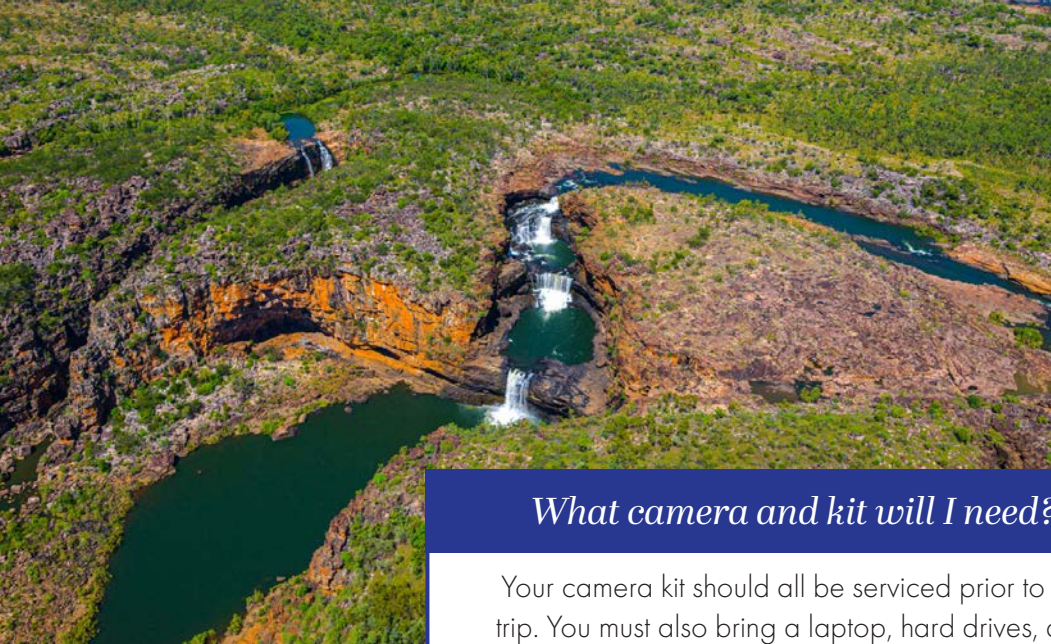
Cruise 12: Over breakfast, say your good byes to the crew as we head for Naturalists Island at the mouth of the Hunter River. The crew will take you in relays to Naturalists Beach where helicopters will land to take you for an amazing scenic helicopter flight over the Mitchell Plateau and the stunning Mitchell Falls. The awesome geological wonder of this ancient landscape will amaze you. Once at the Mitchell Plateau airstrip, you will change to light planes and continue your aerial view of the Kimberley, over Horizontal Falls, as you wind your way back to Broome, arriving mid to late afternoon. A shuttle will transfer you to your chosen destination in Broome.



What technical skills do I need?

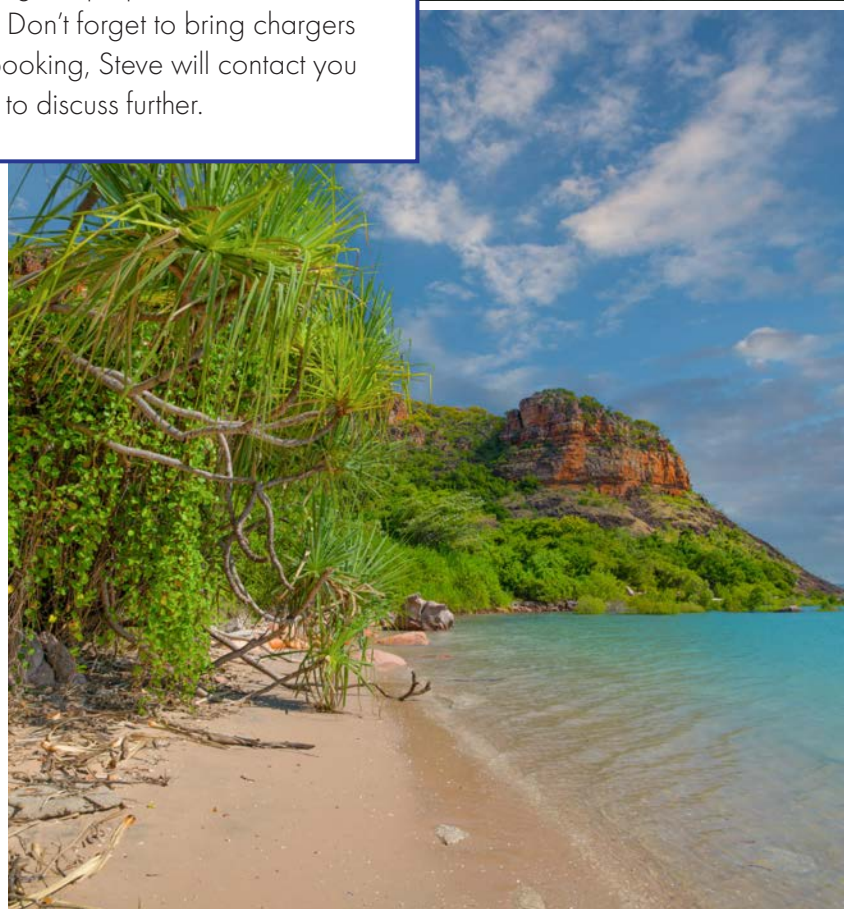
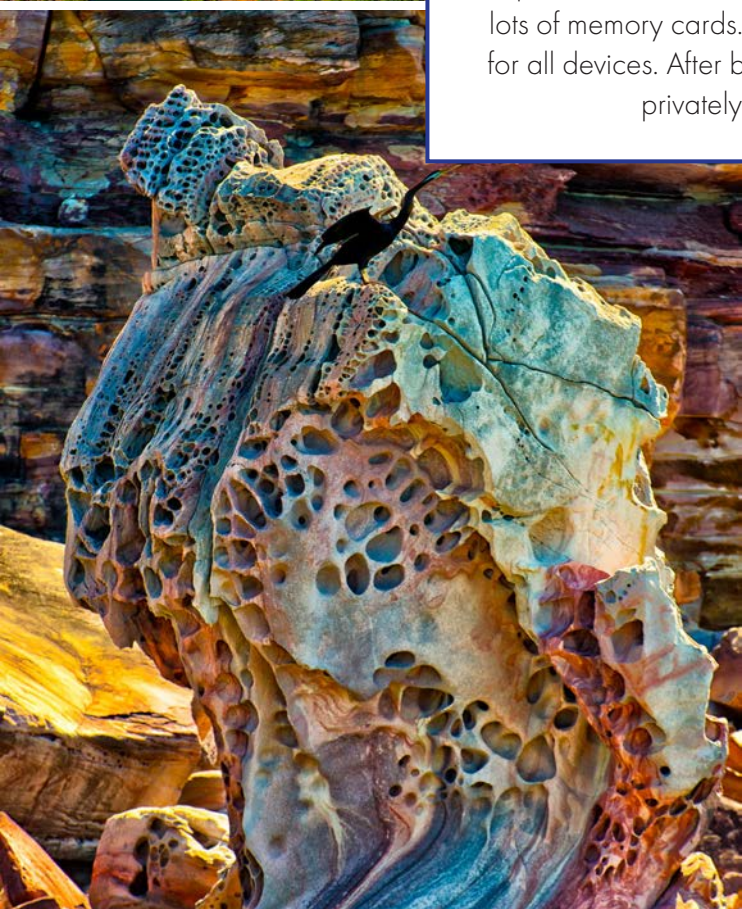
Whether you're a seasoned photographer or just starting out, this is a chance to learn, grow, and be inspired by Steve's lifelong passion for the natural world. Steve will be joined by Lin Sutherland, an accomplished videographer and photographer, Glenn Smith, who will also offer photography and filmmaking skills.





What camera and kit will I need?

Your camera kit should all be serviced prior to the trip. You must also bring a laptop, hard drives, and lots of memory cards. Don't forget to bring chargers for all devices. After booking, Steve will contact you privately to discuss further.



Something Extra... This itinerary lists all the places you can reasonably expect to visit on your 11 night cruise between Broome and the Hunter River. It is likely, however, that there will be additional places of interest visited on the actual cruise, time and tides allowing, which is why we prefer not to give you a day by day itinerary. *The Captain aims to maximize the cruising experience for all passengers, so he will decide when and where he will take you during your time on the Kimberley coast. In this sense, every cruise is a little different and each passenger's experience unique.*



DISCOVERY ONE
KIMBERLEY CRUISES

1800 996 717
discoveryone.com.au